

SEBORRHOEA (GREASE)

Seborrhoea is a problem that originates internally although we normally detect it externally. Normally seborrhoea is felt on the skin and in the hair when the follicular sac is full although there are also seborrhoea that are localised externally and non-existent internally.



Greasy scalp



Normal scalp

Seborrhoea is normally produced by the hyper function of the sebaceous gland, these secrete more oil than normal.

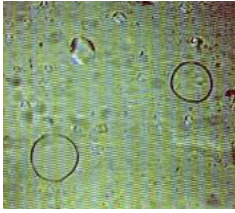
To be able to provide an adequate treatment we have to know how to correctly identify and then correctly classify the oil; for this WONTERSAF-SIMONE has taken a step forward and classified four different types of seborrhoea:

Real seborrhoea: dry skin – oily follicle
Two layer seborrhoea: dry skin – oily follicle – hair loss
Four layer seborrhoea: oily skin – oily follicle
Apparent seborrhoea: oily skin – dystrophy follicle

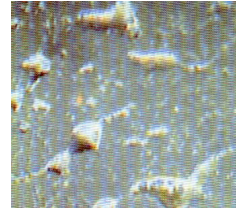
There are other types of dysfunction which can confuse the identification of seborrhoea, they are BROMODOSIS and HYPERHYDROSIS.

BROMODOSIS is when the sebaceous gland and the apocrine sweat gland secretes more than is necessary, normally in equal parts, and the follicle is drowned and little by little it can break down.

HYPERHYDROSIS is excess sweat from the eccrine sweat gland.



Seborrea



Sudor

Grease is the cause of 90% of alopecia.

It can be very easy to confuse sweat with grease, so that we do not we need to take into account that inside the follicle sac there is no excess seborrhoea if we are looking for excess sweat.

OILY TREATMENTS

REAL SEBORRHOEA

Prepare the scalp by applying Dermocapilar mask (ref. 28, 58) previously mixed with Herby (Ref. 25) and apply as if it were a dye, leave to act for 20 minutes, carry out this operation once a week on dirty hair.

Wash at least three times a week with OPAR shampoo (Ref. 203) alternating with Dry and Normal shampoo (Ref. 16).

Apply Regenerative lotion (Ref. 2) daily for 90 days.

TWO LAYER SEBORRHOEA

Prepare the scalp by applying Dermocapilar mask (ref. 28, 58) previously mixed with Herby (Ref. 25) and apply as if it were a dye, leave to act for 20 minutes, carry out this operation once a week on dirty hair.

Wash at least three times a week with OPAR shampoo (Ref. 203) alternating with Dry and Normal shampoo (Ref. 16).

Apply DNA + Pollen (ref. 66) daily for 90 days.

4 LAYER SEBORRHOEA

Prepare the scalp by applying Dermocapilar mask (ref. 28, 58) previously mixed with Herby (Ref. 25) and apply as if it were a dye, leave to act for 20 minutes, carry out this operation once a week on dirty hair.

Wash three times a week with MARINE ANTI-OIL shampoo (Ref. 202) alternating with Placent (Ref. 8).

Apply Natural Anti-oil 12 Herbs lotion (Ref. 46) 3 times a week for 90 consecutive days.

APPARENT SEBORRHOEA

Prepare the scalp by applying Dermocapilar mask (ref. 28, 58) previously mixed with Herby (Ref. 25) and apply as if it were a dye, leave to act for 20 minutes, carry out this operation once a week on dirty hair.

Wash three times a week with MARINE ANTI-OIL shampoo (Ref. 202) alternating with Placent (Ref. 8).

Apply Wontersil Science 6 (Ref. 40) daily for 90 consecutive days.

IMPORTANT: ALWAYS WASH THE HEAD IN THE MORNINGS WITH TEPID WATER (37°C)